

8516 Strawberry Lane Niwot, Colorado

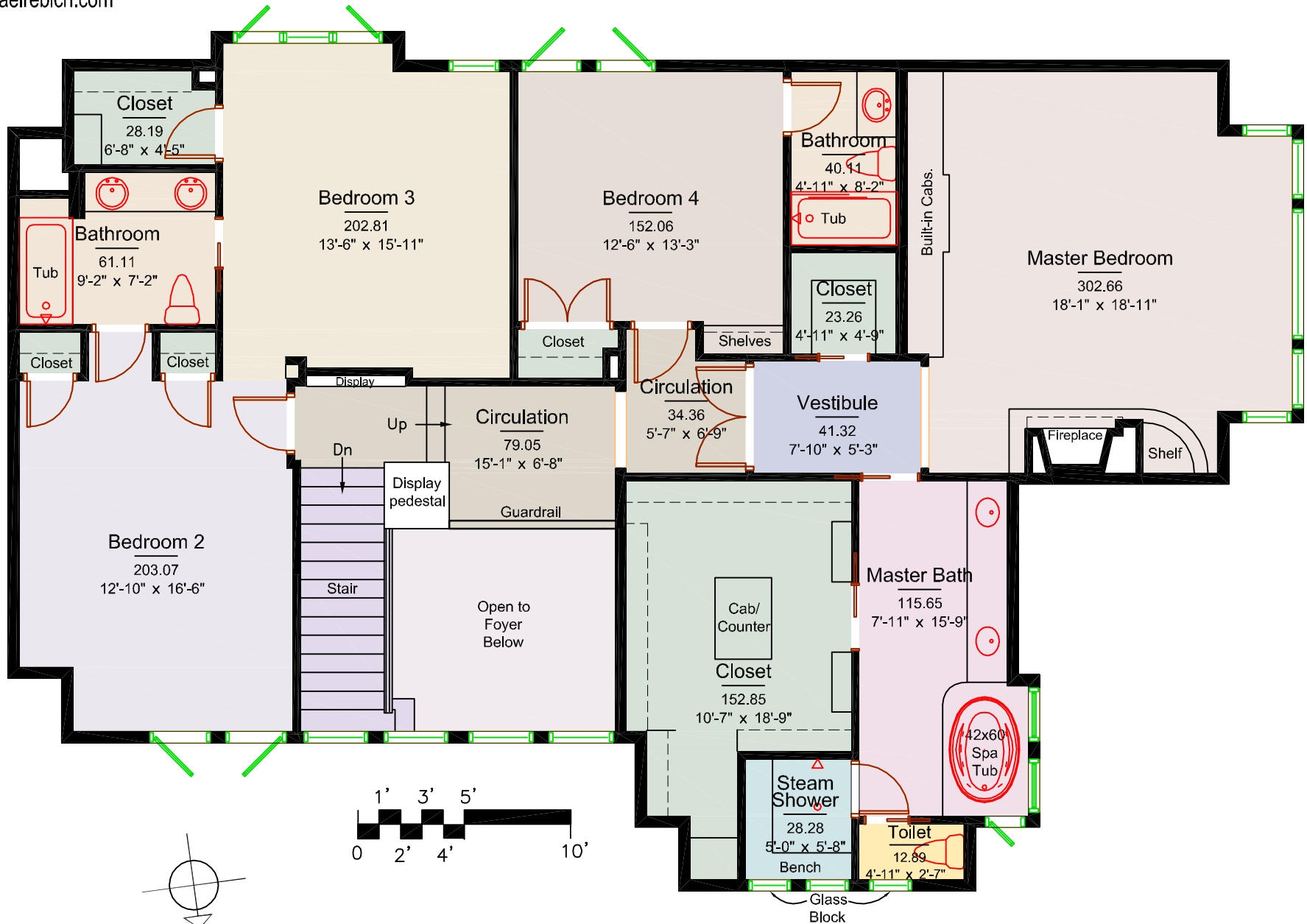
Main Level

1 of 3



8516 Strawberry Lane Niwot, Colorado Upper Level

2 of 3



Plan by:
Colorado Plan Services
 Dan Walker 303-818-8272
 www.planservices.biz

NOTE: THIS PLAN TO BE USED FOR INTERIOR SPACE PLANNING PURPOSES ONLY. AREA AND ROOM DIMENSIONS ARE CALCULATED TO A HIGH DEGREE OF ACCURACY. IF USER FINDS ANY DISCREPANCIES, PLEASE CONTACT COLORADO PLAN SERVICES FOR CLARIFICATIONS OR CORRECTIONS. 303-818-8272

NOTE: All dimension are rounded to the nearest inch and are to face of finish.
 Room dimensions are to widest length and width of space.

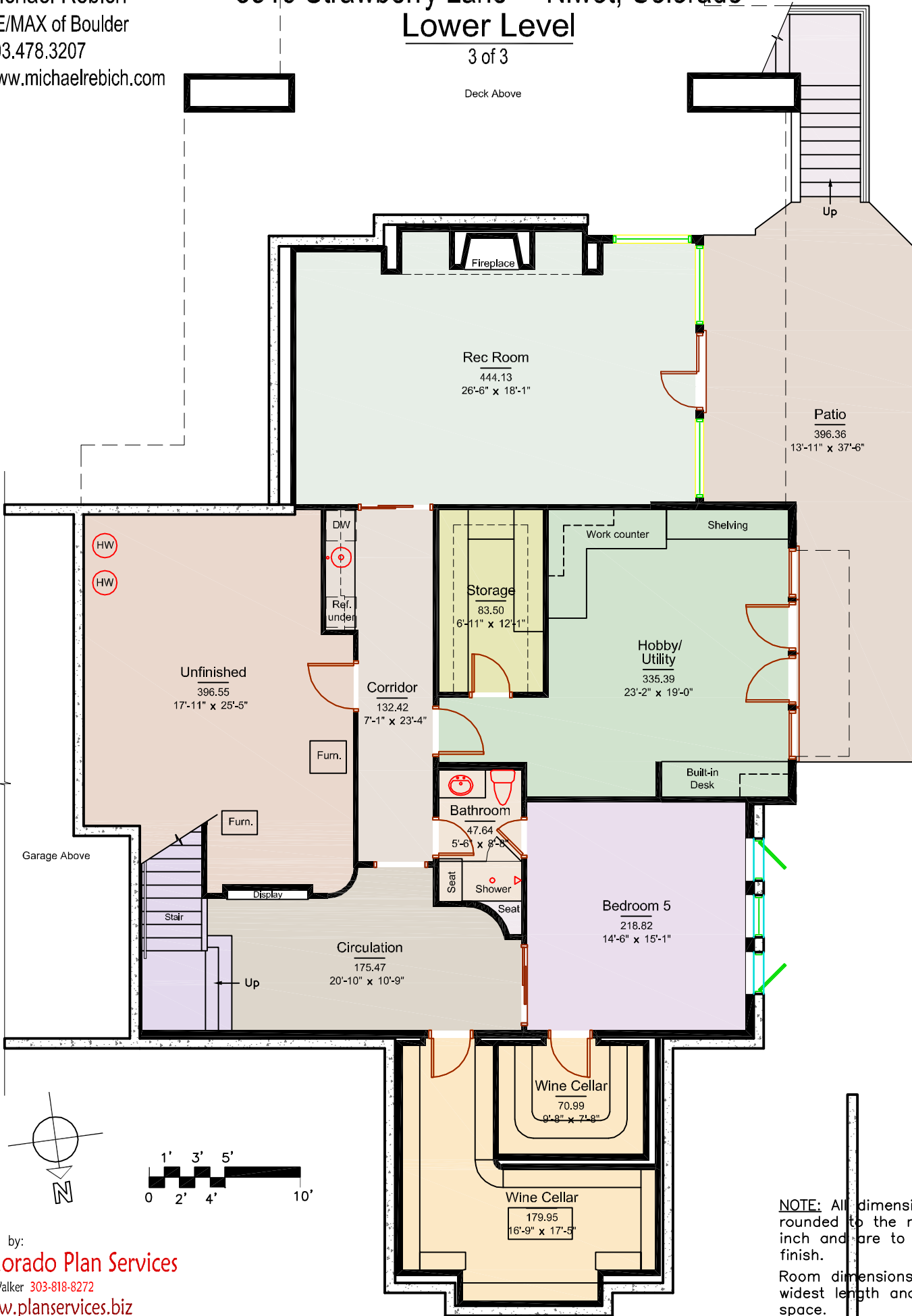
Michael Rebich
 RE/MAX of Boulder
 303.478.3207
 www.michaelrebich.com

8516 Strawberry Lane Niwot, Colorado

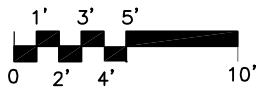
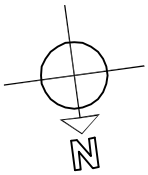
Lower Level

3 of 3

Deck Above



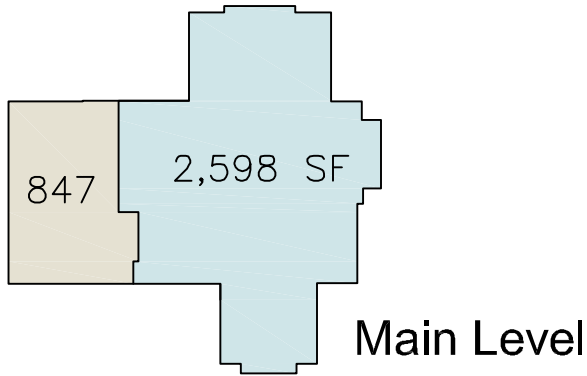
NOTE: THIS PLAN TO BE USED FOR INTERIOR SPACE PLANNING PURPOSES ONLY. AREA AND ROOM DIMENSIONS ARE CALCULATED TO A HIGH DEGREE OF ACCURACY. IF USER FINDS ANY DISCREPANCIES, PLEASE CONTACT COLORADO PLAN SERVICES FOR CLARIFICATIONS OR CORRECTIONS. 303-818-8272





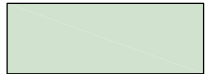
NOTE: All dimension are rounded to the nearest inch and are to face of finish.
 Room dimensions are to widest length and width of space.

Plan by:
Colorado Plan Services
 Dan Walker 303-818-8272
 www.planservices.biz

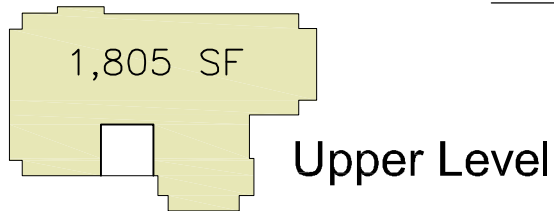
Graphics Copyrighted 2009 by Colorado Plan Services



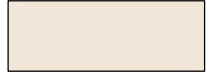
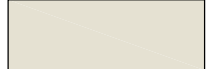
Finished square footage

Main Level	=	2,598 SF	
Upper Level	=	1,805 SF	
Lower Level	=	2,061 SF	

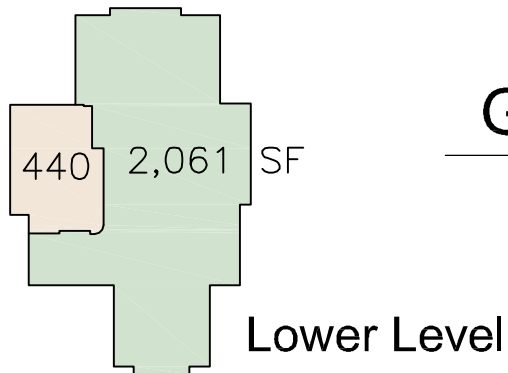
Total = 6,464 SF



Unfinished square footage

Lower Level	=	440 SF	
Garage - main level	=	847 SF	

Total = 1,287 SF



Plan by:

Colorado Plan Services

Dan Walker 303-818-8272

www.planservices.biz

NOTE: THIS PLAN TO BE USED FOR INTERIOR SPACE PLANNING PURPOSES ONLY. AREA AND ROOM DIMENSIONS ARE CALCULATED TO A HIGH DEGREE OF ACCURACY. IF USER FINDS ANY DISCREPANCIES, PLEASE CONTACT COLORADO PLAN SERVICES FOR CLARIFICATIONS OR CORRECTIONS. 303-818-8272